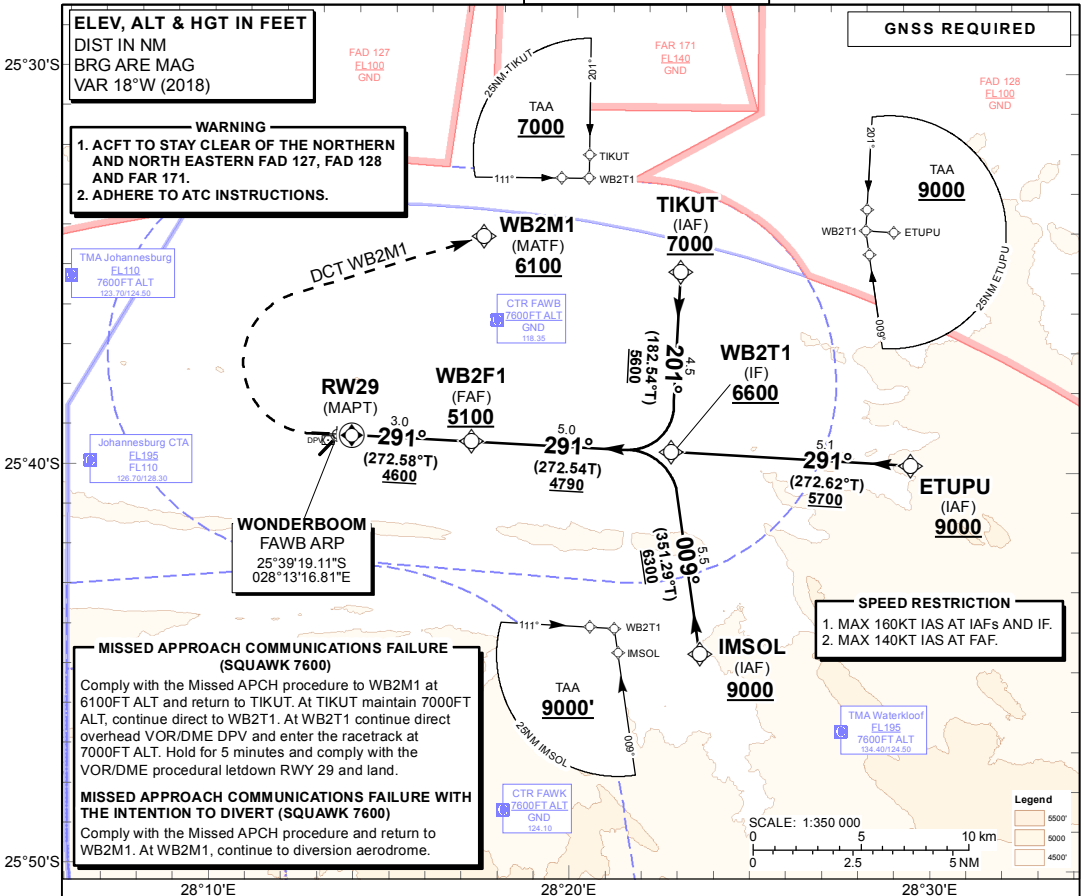


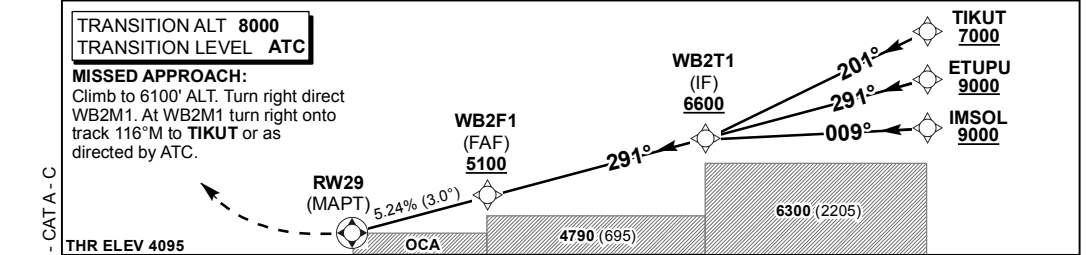
**INSTRUMENT AERODROME ELEV 4095'**  
**APPROACH HEIGHTS RELATED TO**  
**CHART - ICAO THR RWY 29 - ELEV 4095'**

WONDERBOOM TWR: 118.35  
 GND: 120.60

**PRETORIA (WONDERBOOM)**  
**RNAV (GNSS) RWY 29**  
**CAT A - C**



Distance from THR 29	8	7	6	5	4	3	2
ADVISORY ALT(HGT)	6700 (2605)	6380 (2285)	6060 (1965)	5740 (1645)	5420 (1325)	5100 (1005)	4790 (695)



**THR ELEV 4095**  
 NM to/from THR RWY 29  
 MIN TEMP: 0°C

		OCA (H)	A	B	C	GS	KT	80	100	120	140	160	180		
Straight-in Approach	LNAV	2.5%	5280 (1185)	5280 (1185)	5280 (1185)	FAF to THR	M:S	2:15	1:48	1:30	1:17	1:07	1:00		
		3.0%	5110 (1015)	5110 (1015)	5110 (1015)	Rate of descent	FPM	424	531	637	743	849	955		
		3.5%	4950 (855)	4950 (855)	4950 (855)	NOTE:									
		4.0%	4780 (685)	4780 (685)	4780 (685)	1. Missed Approach Turn at MAPT.									
	4.4%	4610 (515)	4610 (515)	4610 (515)	2. No turns prior MAPT.										
	RVR	1500m	1500m	1500m	1800m	3. ACFT entering from the North to maintain listening watch on 124.4 MHz.									
	ALS OUT	1500m	1500m	1500m	2000m	4. Circle to land at the discretion of the pilot in command.									
	Circling	4980 (885)	5260 (1165)	5470 (1375)											

CHANGE: Procedure revised - CAT A - C